

DATE: 4 September 2019
DESIGNER: AF.GS
PROJECT No: SES 03719
PROJECT NAME: Rathmullan. Public Lighting Design Layout



Rathmullan Residential Rds (Rev A) designed in accordance with ISEN13201-1:2015, Lighting Class P4. S/P ratio 1.64

Distributor Rds designed in accordance with ISEN13201-1:2015, Lighting Class P3.

PL-90 - column removed from lighting design.
PL-70 - column removed.in line with requirements indicated for areas to be lit "18306-2-UnlitSpaces-EO".

REV B: Site Road & Landscaping layout updated 19.08.2019.
Taking in Charge drawing received on 29.08.2019.PL layout updated to reflect changes.

Outdoor Lighting Report

PREPARED BY: Sabre Electrical Services Ltd.
Unit 11,
Bellview Industrial Estate,
Tolka Valley Road,
Dublin 11
Phone Number: 01 8110875
Contact: Graham Sheehan
eMail: graham@sabrelighting.ie

Layout Report

General Data

Dimensions in Metres Angles in Degrees

Calculation Grids

ID	Grid Name	X	Y	X' Length	Y' Length	X' Spacing	Y' Spacing
1	Grid 1	705867.11	775076.64	323.00	251.33	1.50	1.50
2	Grid 2	705962.58	774702.76	271.00	123.00	1.50	1.50
3	Grid 3	705868.33	774825.29	323.00	251.33	1.50	1.50
4	Grid 4	706189.33	775117.38	134.81	166.48	1.50	1.50
5	Grid 5	706189.18	774824.59	133.00	293.00	1.49	1.49

Luminaires

Luminaire A Data



Supplier	C U Phosco
Type	P852-12-P4-NW-CB0850-32W
Lamp(s)	740C NW
Lamp Flux (klm)	3.93
File Name	P852-12-P4-NW-CB0850-32W.ies
Maintenance Factor	0.85
Imax70,80,90(cd/klm)	760.6, 161.3, 0.8
Lamp S/P Ratio	1.64
No. in Project	41

Luminaire B Data



Supplier	C U Phosco
Type	P852-12-P4-NW-CB0450-18W
Lamp(s)	740C NW
Lamp Flux (klm)	2.28
File Name	P852-12-P4-NW-CB0450-18W.ies
Maintenance Factor	0.85
Imax70,80,90(cd/klm)	760.6, 161.3, 0.8
Lamp S/P Ratio	1.64
No. in Project	151

Luminaire C Data



Supplier	C U Phosco
Type	P863-32-P4-NW-F0500-51W
Lamp(s)	740P NW
Lamp Flux (klm)	6.06
File Name	P863-32-P4-NW-F0500-51W.ies
Maintenance Factor	0.80
Imax70,80,90(cd/klm)	682.6, 178.4, 0.0
Lamp S/P Ratio	1.64
No. in Project	8

Luminaire D Data



Supplier	C U Phosco
Type	P863-32-P4-NW-F0600-60W
Lamp(s)	740P NW
Lamp Flux (klm)	7.15
File Name	P863-32-P4-NW-F0600-60W.ies
Maintenance Factor	0.80
Imax70,80,90(cd/klm)	682.6, 178.4, 0.0
Lamp S/P Ratio	1.64
No. in Project	4

Luminaires



Luminaire E Data

Supplier	C U Phosco
Type	P852-6-R2B-NW-F0350-9W
Lamp(s)	740P NW
Lamp Flux (klm)	0.89
File Name	P852-6-R2B-NW-F0350-9W.ies
Maintenance Factor	0.85
Imax70,80,90(cd/klm)	688.5, 38.3, 4.6
Lamp S/P Ratio	1.64
No. in Project	15



Luminaire F Data

Supplier	C U Phosco
Type	P511LED-09-P-NW-E250-30W
Lamp(s)	740P NW
Lamp Flux (klm)	3.48
File Name	P511LED-09-P-NW-E250-30W.ies
Maintenance Factor	1.00
Imax70,80,90(cd/klm)	490.7, 56.0, 29.1
Lamp S/P Ratio	1.64
No. in Project	2

Layout

ID	Type	X	Y	Height	Angle	Tilt	Cant	Out-reach	Dimmed to	Target X	Target Y	Target Z
1	B	706133.49	775248.45	6.00	330.00	5.00	0.00	0.40	100%			
2	A	706281.20	774999.60	6.00	337.00	5.00	0.00	0.40	100%			
3	A	706341.17	775129.52	6.00	172.00	5.00	0.00	0.40	100%			
4	A	706319.59	775195.17	6.00	218.00	5.00	0.00	0.40	100%			
5	A	706295.35	775226.71	6.00	220.00	5.00	0.00	0.40	100%			
6	A	706276.24	775257.30	6.00	207.00	5.00	0.00	0.40	0%			
7	A	706257.02	775291.11	6.00	211.00	5.00	0.00	0.40	100%			
8	A	706235.54	775319.99	6.00	227.00	5.00	0.00	0.40	100%			
9	A	706218.27	775339.71	6.00	197.00	5.00	0.00	0.40	100%			
10	A	706211.56	775372.12	6.00	191.00	5.00	0.00	0.40	100%			
11	A	706196.74	775401.98	6.00	235.00	5.00	0.00	0.40	100%			
12	A	706160.43	775416.04	6.00	255.00	5.00	0.00	0.40	100%			
13	A	706274.77	774970.75	6.00	339.00	5.00	0.00	0.40	100%			
14	A	706270.76	774942.31	6.00	348.00	5.00	0.00	0.40	100%			
15	A	706266.19	774915.74	6.00	350.00	5.00	0.00	0.40	100%			
16	A	706258.92	774858.51	6.00	347.00	5.00	0.00	0.40	100%			
17	E	706143.01	774766.41	5.00	211.00	0.00	0.00	0.40	100%			
18	E	706176.83	774784.36	5.00	207.00	0.00	0.00	0.40	100%			
19	A	706164.44	774747.60	6.00	124.00	5.00	0.00	0.40	100%			
20	A	706173.35	774769.56	6.00	304.00	5.00	0.00	0.40	100%			
21	A	706200.57	774771.25	6.00	125.00	5.00	0.00	0.40	100%			
22	E	706160.39	774945.34	5.00	291.00	0.00	0.00	0.40	100%			
23	E	706140.27	774945.11	5.00	243.00	0.00	0.00	0.40	100%			
24	B	706170.97	774715.74	6.00	259.00	5.00	0.00	0.40	100%			
25	B	706211.61	774763.09	6.00	351.00	5.00	0.00	0.40	100%			
26	B	706200.01	774724.21	6.00	329.00	5.00	0.00	0.40	100%			
27	B	706077.55	775263.65	6.00	325.00	5.00	0.00	0.40	100%			
28	A	706251.49	774834.58	6.00	339.00	5.00	0.00	0.40	100%			
29	E	706106.54	775230.59	5.00	145.00	0.00	0.00	0.40	100%			
30	B	706075.34	775237.57	6.00	3.00	5.00	0.00	0.40	100%			
31	B	706075.39	775206.79	6.00	2.00	5.00	0.00	0.40	100%			
33	B	706075.41	775168.54	6.00	0.00	5.00	0.00	0.40	100%			
34	B	705978.45	775265.72	6.00	178.00	5.00	0.00	0.40	100%			
35	B	706075.45	775130.64	6.00	2.00	5.00	0.00	0.40	100%			
36	B	706122.46	775196.64	6.00	268.00	5.00	0.00	0.40	100%			
37	B	706075.45	775047.17	6.00	2.00	5.00	0.00	0.40	100%			

Layout Continued

ID	Type	X	Y	Height	Angle	Tilt	Cant	Out-reach	Dimmed to	Target X	Target Y	Target Z
38	B	706104.20	775185.25	6.00	86.00	5.00	0.00	0.40	100%			
39	B	706154.55	775185.66	6.00	95.00	5.00	0.00	0.40	100%			
40	B	706147.02	775160.60	6.00	327.00	5.00	0.00	0.40	100%			
41	B	706171.52	775179.61	6.00	152.00	5.00	0.00	0.40	100%			
42	B	706158.18	775136.06	6.00	183.00	5.00	0.00	0.40	100%			
43	B	706142.39	775123.00	6.00	1.00	5.00	0.00	0.40	100%			
44	B	706158.06	775094.14	6.00	173.00	5.00	0.00	0.40	100%			
45	B	706142.29	775079.09	6.00	358.00	5.00	0.00	0.40	100%			
46	B	706177.16	775147.06	6.00	64.00	5.00	0.00	0.40	100%			
47	B	706205.35	775134.19	6.00	65.00	5.00	0.00	0.40	100%			
48	B	706067.31	775185.21	6.00	91.00	0.00	0.00	0.40	100%			
49	B	706021.97	775240.98	6.00	178.00	5.00	0.00	0.40	100%			
50	B	706006.42	775216.76	6.00	358.00	0.00	0.00	0.40	100%			
51	B	705991.96	775179.25	6.00	92.00	5.00	0.00	0.40	100%			
52	B	705952.86	775187.79	6.00	270.00	0.00	0.00	0.40	100%			
53	B	706022.06	775196.07	6.00	179.00	5.00	0.00	0.40	100%			
54	B	706006.32	775161.93	6.00	0.00	5.00	0.00	0.40	100%			
55	B	705909.75	775187.85	6.00	270.00	5.00	0.00	0.40	100%			
56	B	705957.15	775266.38	6.00	0.00	5.00	0.00	0.40	100%			
57	B	706006.40	775126.44	6.00	1.00	5.00	0.00	0.40	100%			
58	B	706022.07	775152.20	6.00	178.00	5.00	0.00	0.40	100%			
58	A	706336.34	775166.38	6.00	201.00	5.00	0.00	0.40	100%			
60	B	706006.33	775268.91	6.00	357.00	5.00	0.00	0.40	100%			
61	B	706022.15	775278.93	6.00	184.00	5.00	0.00	0.40	100%			
62	B	705991.79	775116.56	6.00	91.00	5.00	0.00	0.40	100%			
63	B	706047.74	775317.85	6.00	266.00	5.00	0.00	0.40	100%			
64	B	706081.74	775311.47	6.00	89.00	5.00	0.00	0.40	100%			
65	B	706113.60	775311.53	6.00	89.00	5.00	0.00	0.40	100%			
66	B	706145.33	775311.53	6.00	90.00	5.00	0.00	0.40	100%			
67	B	706175.90	775311.56	6.00	89.00	5.00	0.00	0.40	100%			
68	B	706179.25	775287.24	6.00	358.00	5.00	0.00	0.40	100%			
69	B	706177.15	775260.15	6.00	323.00	5.00	0.00	0.40	100%			
70	E	706152.67	775238.45	6.00	148.00	5.00	0.00	0.40	100%			
71	B	706208.27	775256.34	6.00	54.00	5.00	0.00	0.40	100%			
72	B	706240.60	775232.91	6.00	53.00	5.00	0.00	0.40	100%			
73	B	706279.16	775204.75	6.00	51.00	0.00	0.00	0.40	100%			

Layout Continued

ID	Type	X	Y	Height	Angle	Tilt	Cant	Out-reach	Dimmed to	Target X	Target Y	Target Z
75	B	706298.12	775147.04	6.00	323.00	5.00	0.00	0.40	100%			
76	B	706234.28	775121.34	6.00	68.00	5.00	0.00	0.40	100%			
77	B	706263.40	775108.25	6.00	69.00	5.00	0.00	0.40	100%			
78	B	706283.75	775089.92	6.00	30.00	5.00	0.00	0.40	100%			
79	B	706036.33	775185.30	6.00	89.00	5.00	0.00	0.40	100%			
80	B	705960.52	775125.40	6.00	271.00	5.00	0.00	0.40	100%			
81	B	705917.35	775125.39	6.00	270.00	5.00	0.00	0.40	100%			
82	B	705990.05	775250.39	6.00	270.00	5.00	0.00	0.40	100%			
83	B	705916.57	775250.38	6.00	269.00	5.00	0.00	0.40	100%			
84	B	705954.09	775250.37	6.00	270.00	5.00	0.00	0.40	100%			
85	B	706016.48	775310.23	6.00	303.00	5.00	0.00	0.40	100%			
86	B	705910.75	775266.56	6.00	181.00	5.00	0.00	0.40	100%			
87	B	705932.72	775295.14	6.00	357.00	5.00	0.00	0.40	100%			
88	B	705959.21	775292.66	6.00	44.00	5.00	0.00	0.40	100%			
89	B	705923.39	775283.26	6.00	269.00	5.00	0.00	0.40	100%			
90	B	706014.00	775056.78	6.00	157.00	5.00	0.00	0.40	100%			
91	E	705991.23	775061.89	5.00	295.00	0.00	0.00	0.40	100%			
92	B	705978.98	775036.79	6.00	114.00	5.00	0.00	0.40	100%			
93	B	705949.54	775034.93	6.00	292.00	5.00	0.00	0.40	100%			
94	B	705930.22	775048.85	6.00	20.00	5.00	0.00	0.40	100%			
95	B	705936.35	775062.39	6.00	262.00	5.00	0.00	0.40	100%			
96	B	705969.50	775062.37	6.00	270.00	5.00	0.00	0.40	100%			
97	B	706010.92	775034.98	6.00	207.00	5.00	0.00	0.40	100%			
98	B	706000.77	775019.00	6.00	24.00	5.00	0.00	0.40	100%			
99	B	706019.42	774975.71	6.00	24.00	5.00	0.00	0.40	100%			
100	B	706028.56	774993.84	6.00	203.00	5.00	0.00	0.40	100%			
101	B	706064.52	774911.02	6.00	200.00	5.00	0.00	0.40	100%			
102	B	706046.27	774952.98	6.00	204.00	5.00	0.00	0.40	100%			
103	B	706031.64	774947.58	6.00	26.00	5.00	0.00	0.40	100%			
104	B	706080.80	774872.99	6.00	203.00	5.00	0.00	0.40	100%			
105	B	706065.45	774868.22	6.00	22.00	5.00	0.00	0.40	100%			
106	B	706099.12	774829.89	6.00	203.00	5.00	0.00	0.40	100%			
107	B	706079.84	774835.26	6.00	23.00	5.00	0.00	0.40	100%			
108	B	706115.92	774791.48	6.00	211.00	5.00	0.00	0.40	100%			
109	B	706096.43	774796.64	6.00	26.00	5.00	0.00	0.40	100%			
110	B	706110.81	774762.96	6.00	24.00	5.00	0.00	0.40	100%			

Layout Continued

ID	Type	X	Y	Height	Angle	Tilt	Cant	Out-reach	Dimmed to	Target X	Target Y	Target Z
111	B	706084.40	774759.27	6.00	292.00	5.00	0.00	0.40	100%			
112	B	706035.58	774738.33	6.00	297.00	5.00	0.00	0.40	100%			
113	B	706060.96	774739.52	6.00	164.00	5.00	0.00	0.40	100%			
114	B	706073.64	774814.00	6.00	115.00	5.00	0.00	0.40	100%			
115	B	706034.03	774806.35	6.00	296.00	5.00	0.00	0.40	100%			
116	B	705979.58	774786.60	6.00	337.00	5.00	0.00	0.40	100%			
117	B	706048.08	774872.29	6.00	113.00	5.00	0.00	0.40	100%			
118	B	706013.19	774859.46	6.00	113.00	5.00	0.00	0.40	100%			
119	B	705984.04	774846.96	6.00	113.00	5.00	0.00	0.40	100%			
120	B	705978.26	774876.83	6.00	203.00	5.00	0.00	0.40	100%			
121	B	706011.99	774924.72	6.00	295.00	5.00	0.00	0.40	100%			
122	B	705973.54	774907.83	6.00	290.00	5.00	0.00	0.40	100%			
123	B	706170.13	774814.01	6.00	204.00	5.00	0.00	0.40	100%			
124	B	706030.93	774899.87	6.00	24.00	5.00	0.00	0.40	100%			
125	B	705960.32	774970.13	6.00	296.00	5.00	0.00	0.40	100%			
126	B	705931.00	774961.64	6.00	351.00	5.00	0.00	0.40	100%			
127	B	706079.53	775013.09	6.00	14.00	5.00	0.00	0.40	100%			
128	B	706091.11	774983.62	6.00	22.00	5.00	0.00	0.40	100%			
129	B	706158.51	775038.58	6.00	184.00	5.00	0.00	0.40	100%			
130	B	706142.21	775047.20	6.00	8.00	5.00	0.00	0.40	100%			
131	B	706172.94	775002.48	6.00	206.00	5.00	0.00	0.40	100%			
132	B	706155.57	775003.31	6.00	22.00	5.00	0.00	0.40	100%			
133	B	706190.48	774961.62	6.00	204.00	5.00	0.00	0.40	100%			
134	B	706180.91	774932.74	6.00	113.00	5.00	0.00	0.40	100%			
135	B	706171.07	774963.87	6.00	26.00	5.00	0.00	0.40	100%			
136	B	706146.96	774918.15	6.00	113.00	5.00	0.00	0.40	100%			
137	B	706110.71	774902.53	6.00	113.00	5.00	0.00	0.40	100%			
138	B	706082.36	774890.38	6.00	113.00	5.00	0.00	0.40	100%			
139	B	706156.44	774969.99	6.00	294.00	5.00	0.00	0.40	100%			
140	B	706127.94	774957.72	6.00	296.00	5.00	0.00	0.40	100%			
141	B	706099.02	774945.16	6.00	295.00	5.00	0.00	0.40	100%			
142	B	706070.54	774932.90	6.00	297.00	5.00	0.00	0.40	100%			
143	B	706192.04	774922.98	6.00	3.00	5.00	0.00	0.40	100%			
144	B	706197.94	774894.70	6.00	26.00	5.00	0.00	0.40	100%			
145	B	706134.33	774901.33	6.00	201.00	5.00	0.00	0.40	100%			
146	B	706142.99	774876.80	6.00	205.00	5.00	0.00	0.40	100%			

Layout Continued

ID	Type	X	Y	Height	Angle	Tilt	Cant	Out-reach	Dimmed to	Target X	Target Y	Target Z
147	B	706157.36	774843.46	6.00	203.00	5.00	0.00	0.40	100%			
148	B	706145.64	774788.86	6.00	298.00	5.00	0.00	0.40	100%			
150	B	706188.35	774805.34	6.00	291.00	5.00	0.00	0.40	100%			
151	B	706175.25	775069.86	6.00	268.00	5.00	0.00	0.40	100%			
152	B	706209.23	775059.64	6.00	63.00	5.00	0.00	0.40	100%			
153	B	706243.25	775053.10	6.00	245.00	5.00	0.00	0.40	100%			
154	B	706219.68	775031.20	6.00	21.00	5.00	0.00	0.40	100%			
155	B	706235.00	774995.66	6.00	25.00	5.00	0.00	0.40	100%			
156	B	706287.55	775062.88	6.00	338.00	5.00	0.00	0.40	100%			
157	B	706272.80	775029.87	6.00	337.00	5.00	0.00	0.40	100%			
158	B	706250.34	775013.34	6.00	293.00	5.00	0.00	0.40	100%			
159	B	706210.16	774866.30	6.00	22.00	5.00	0.00	0.40	100%			
160	B	706221.12	774837.40	6.00	21.00	5.00	0.00	0.40	100%			
161	B	706217.91	774814.69	6.00	290.00	5.00	0.00	0.40	100%			
162	B	706238.42	774837.88	6.00	314.00	0.00	0.00	0.40	100%			
163	B	706248.45	774868.81	6.00	355.00	5.00	0.00	0.40	100%			
164	B	706252.16	774901.53	6.00	352.00	5.00	0.00	0.40	100%			
165	B	706255.03	774946.34	6.00	351.00	5.00	0.00	0.40	100%			
166	B	706022.06	775109.12	6.00	181.00	5.00	0.00	0.40	100%			
167	B	706075.40	775092.00	6.00	359.00	5.00	0.00	0.40	100%			
168	B	706099.79	774963.47	6.00	25.00	5.00	0.00	0.40	100%			
169	B	706193.32	774752.50	6.00	350.00	5.00	0.00	0.40	100%			
170	A	706262.16	774885.52	6.00	348.00	5.00	0.00	0.40	100%			
171	A	706289.57	775023.50	6.00	336.00	5.00	0.00	0.40	100%			
172	E	705977.66	775296.11	5.00	78.00	0.00	0.00	0.40	100%			
173	B	706006.51	775084.72	6.00	0.00	5.00	0.00	0.40	100%			
174	B	705894.92	775128.32	6.00	333.00	5.00	0.00	0.40	100%			
175	B	705887.05	775190.82	6.00	331.00	5.00	0.00	0.40	100%			
176	B	706156.01	775254.47	6.00	275.00	5.00	0.00	0.40	100%			
177	E	706097.04	775217.49	5.00	149.00	0.00	0.00	0.40	100%			
178	B	706000.32	774976.34	6.00	112.00	5.00	0.00	0.40	100%			
179	B	706001.38	774792.31	6.00	295.00	5.00	0.00	0.40	100%			
180	A	706123.26	775425.52	6.00	259.00	5.00	0.00	0.40	100%			
181	E	705957.17	775047.08	5.00	292.00	0.00	0.00	0.40	100%			
182	E	706146.63	775201.97	5.00	144.00	0.00	0.00	0.40	100%			
183	B	706301.94	775172.00	6.00	2.00	5.00	0.00	0.40	100%			

Layout Continued

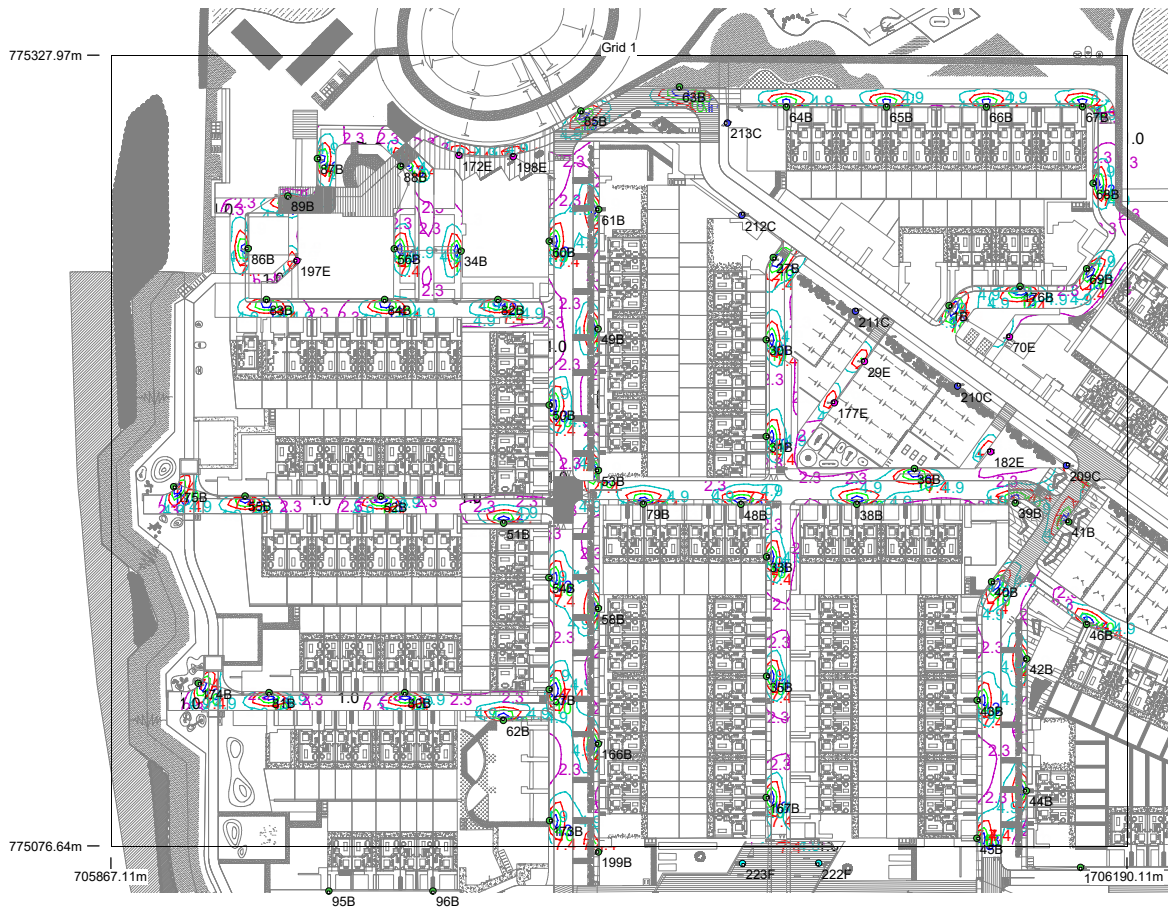
ID	Type	X	Y	Height	Angle	Tilt	Cant	Out-reach	Dimmed to	Target X	Target Y	Target Z
184	B	706261.76	775228.47	6.00	290.00	5.00	0.00	0.40	100%			
185	A	706301.28	775048.17	6.00	339.00	5.00	0.00	0.40	100%			
186	A	706312.90	775073.14	6.00	339.00	5.00	0.00	0.40	100%			
187	A	706088.53	775430.97	6.00	262.00	5.00	0.00	0.40	100%			
188	A	706053.51	775437.82	6.00	260.00	5.00	0.00	0.40	100%			
189	A	706019.49	775443.89	6.00	261.00	5.00	0.00	0.40	100%			
190	A	705984.22	775444.71	6.00	275.00	5.00	0.00	0.40	100%			
191	A	705950.16	775441.23	6.00	276.00	5.00	0.00	0.40	100%			
192	A	705918.21	775438.92	6.00	272.00	5.00	0.00	0.40	100%			
193	A	705885.80	775442.17	6.00	259.00	5.00	0.00	0.40	100%			
194	B	706138.92	774720.62	6.00	259.00	5.00	0.00	0.40	100%			
195	B	706130.89	774756.65	6.00	209.00	5.00	0.00	0.40	100%			
196	B	706049.66	774904.87	6.00	25.00	5.00	0.00	0.40	100%			
197	E	705926.25	775262.67	5.00	179.00	0.00	0.00	0.40	100%			
198	E	705994.96	775295.70	5.00	105.00	0.00	0.00	0.40	100%			
199	B	706022.09	775074.72	6.00	181.00	5.00	0.00	0.40	100%			
200	A	706142.01	774750.08	6.00	295.00	5.00	0.00	0.40	100%			
201	D	706308.93	775096.83	8.00	50.00	5.00	0.00	0.50	100%			
202	D	706341.81	775096.62	8.00	263.00	5.00	0.00	0.50	100%			
203	D	706326.80	775109.16	8.00	346.00	5.00	0.00	0.50	100%			
204	D	706330.05	775082.89	8.00	165.00	5.00	0.00	0.50	100%			
206	C	706276.35	775120.85	8.00	53.00	5.00	0.00	0.50	100%			
207	C	706241.62	775146.27	8.00	49.00	5.00	0.00	0.50	100%			
208	C	706207.12	775171.09	8.00	50.00	5.00	0.00	0.50	100%			
209	C	706170.82	775197.53	8.00	46.00	5.00	0.00	0.50	100%			
210	C	706136.24	775222.82	8.00	55.00	5.00	0.00	0.50	100%			
211	C	706103.72	775246.54	8.00	58.00	5.00	0.00	0.50	100%			
212	C	706067.63	775277.14	8.00	55.00	5.00	0.00	0.50	100%			
213	C	706063.06	775306.37	8.00	182.00	5.00	0.00	0.50	100%			
214	A	706237.76	774814.35	6.00	318.00	5.00	0.00	0.40	100%			
215	A	706213.82	774795.81	6.00	303.00	5.00	0.00	0.40	100%			
216	A	706126.06	774728.32	6.00	111.00	5.00	0.00	0.40	100%			
217	A	706104.09	774736.13	6.00	286.00	5.00	0.00	0.40	100%			
218	A	706073.72	774728.71	6.00	278.00	5.00	0.00	0.40	100%			
219	A	706042.58	774727.64	6.00	272.00	5.00	0.00	0.40	100%			
220	A	706014.92	774723.24	6.00	272.00	5.00	0.00	0.40	100%			

Layout Continued

ID	Type	X	Y	Height	Angle	Tilt	Cant	Out-reach	Dimmed to	Target X	Target Y	Target Z
221	A	705982.30	774722.42	6.00	273.00	5.00	0.00	0.40	100%			
222	F	706092.02	775071.19	6.00	228.00	0.00	0.00	0.40	100%			
223	F	706067.82	775071.09	5.00	299.00	0.00	0.00	0.40	100%			
224	E	706120.44	775061.41	5.00	87.00	0.00	0.00	0.40	100%			
226	E	706039.34	775061.29	5.00	88.00	0.00	0.00	0.40	100%			

Horizontal Illuminance (lux)

Grid 1

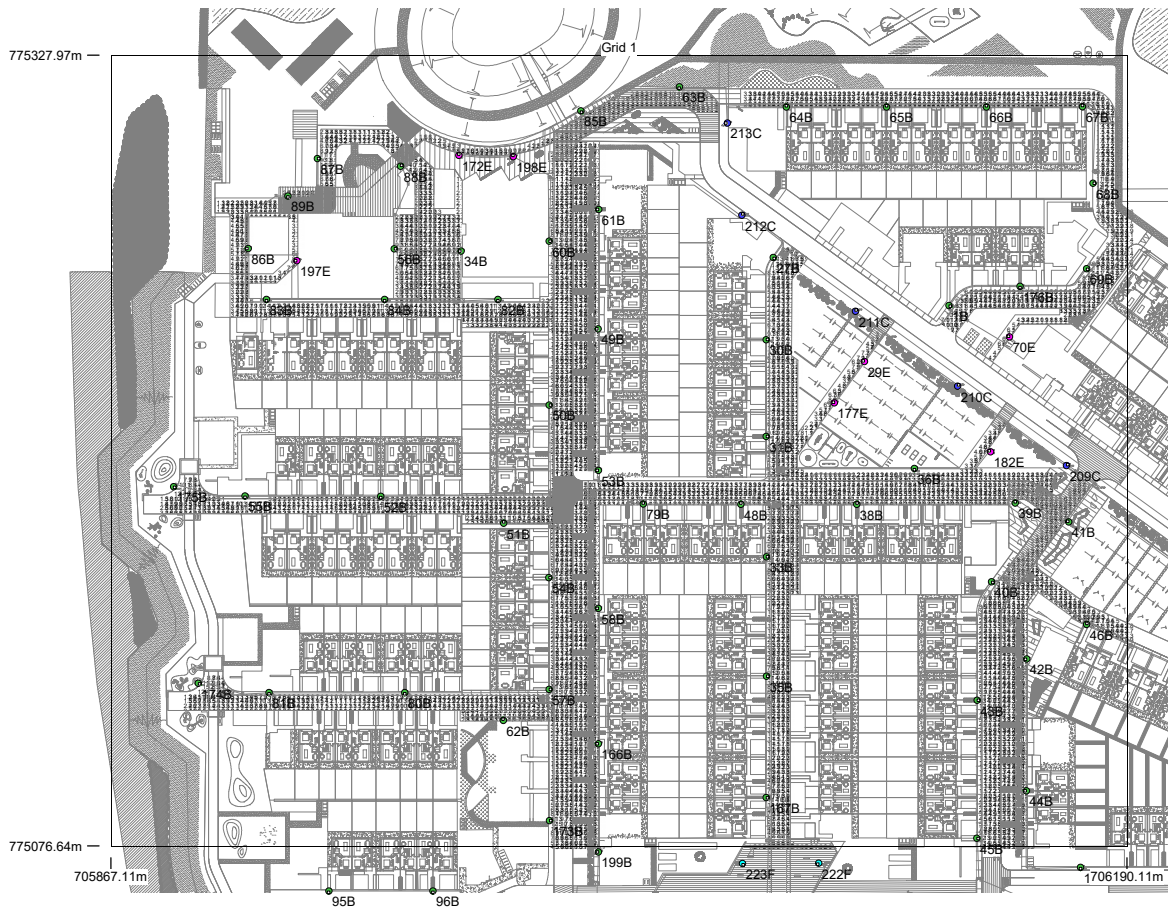


Results

Eav	4.86
Emin	0.98
Emax	16.45
Emin/Emax	0.06
Emin/Eav	0.20

Horizontal Illuminance (lux)

Grid 1

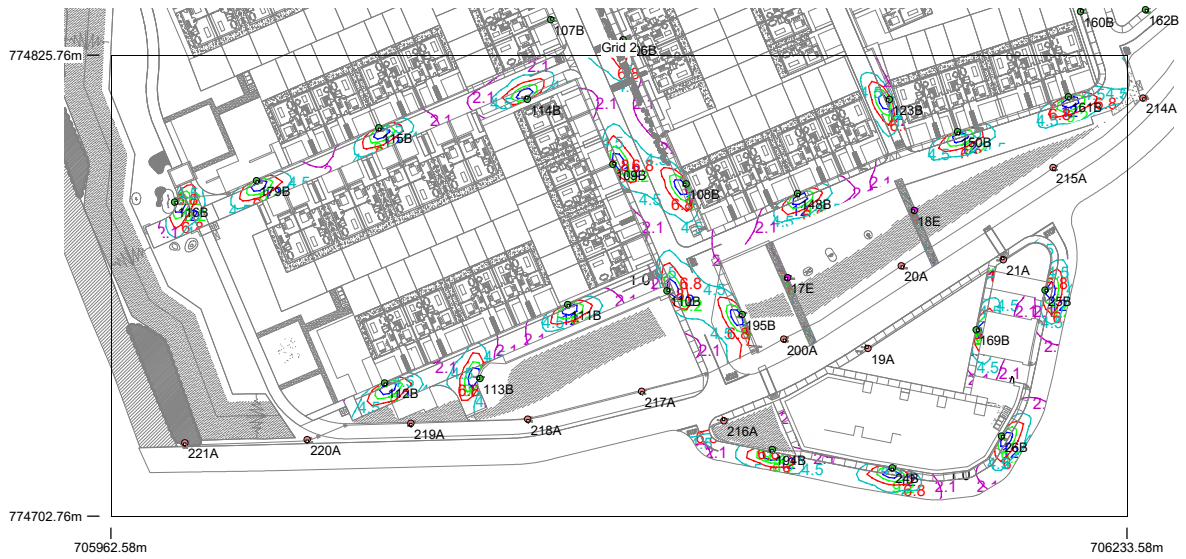


Results

Eav	4.86
Emin	0.98
Emax	16.45
Emin/Emax	0.06
Emin/Eav	0.20

Horizontal Illuminance (lux)

Grid 2

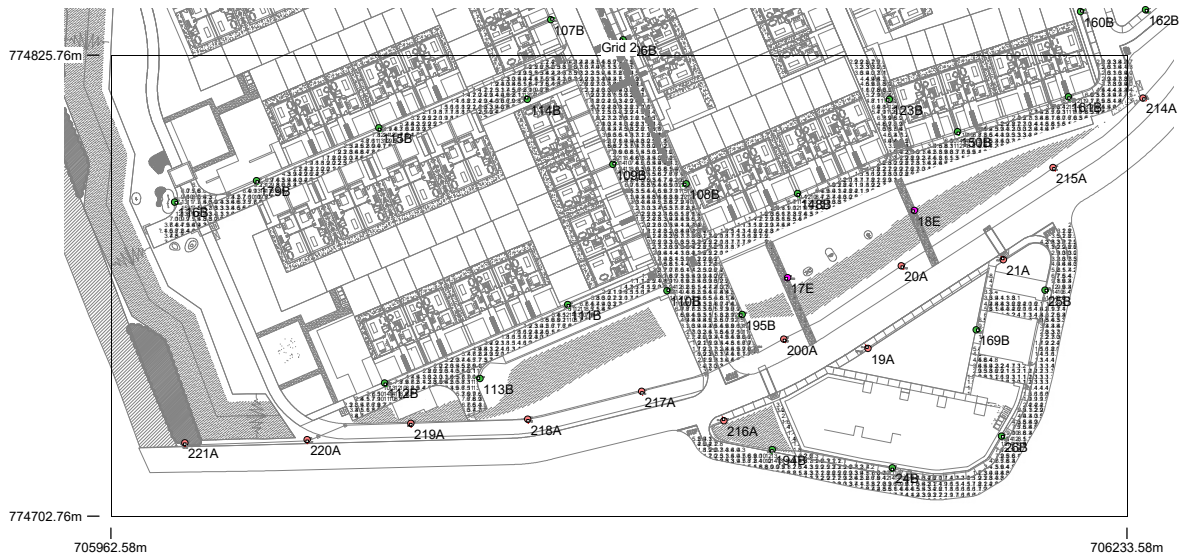


Results

Eav	4.69
Emin	0.97
Emax	15.03
Emin/Emax	0.06
Emin/Eav	0.21

Horizontal Illuminance (lux)

Grid 2



Results

Eav	4.69
Emin	0.97
Emax	15.03
Emin/Emax	0.06
Emin/Eav	0.21

Horizontal Illuminance (lux)

Grid 3



Results

Eav	4.78
Emin	0.93
Emax	34.37
Emin/Emax	0.03
Emin/Eav	0.19

Horizontal Illuminance (lux)

Grid 3



Results

Eav	4.78
Emin	0.93
E _{max}	34.37
E _{min} /E _{max}	0.03
E _{min} /E _{av}	0.19

Horizontal Illuminance (lux)

Grid 4

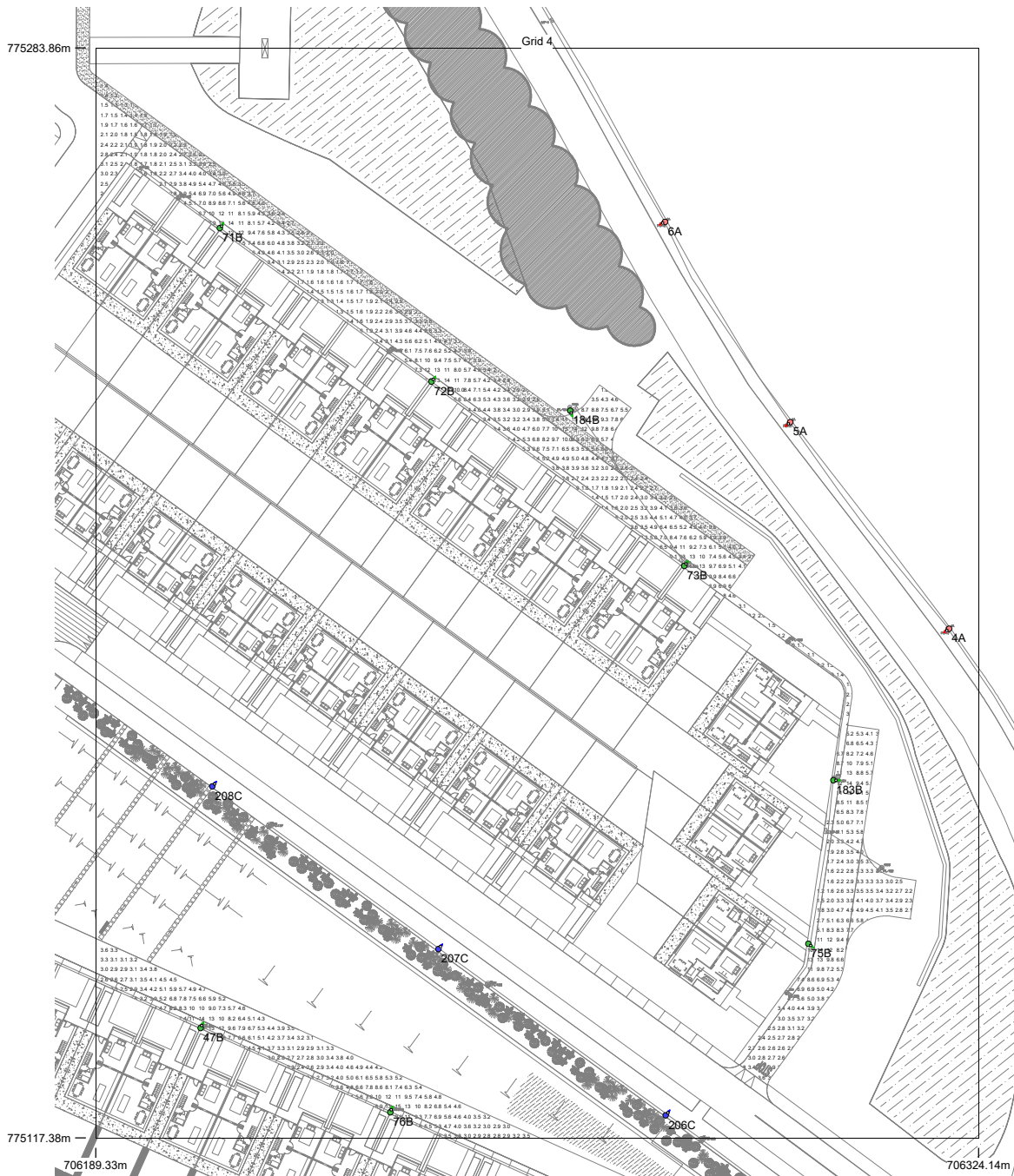


Results

Eav	4.73
Emin	1.04
Emax	14.74
Emin/Emax	0.07
Emin/Eav	0.22

Horizontal Illuminance (lux)

Grid 4

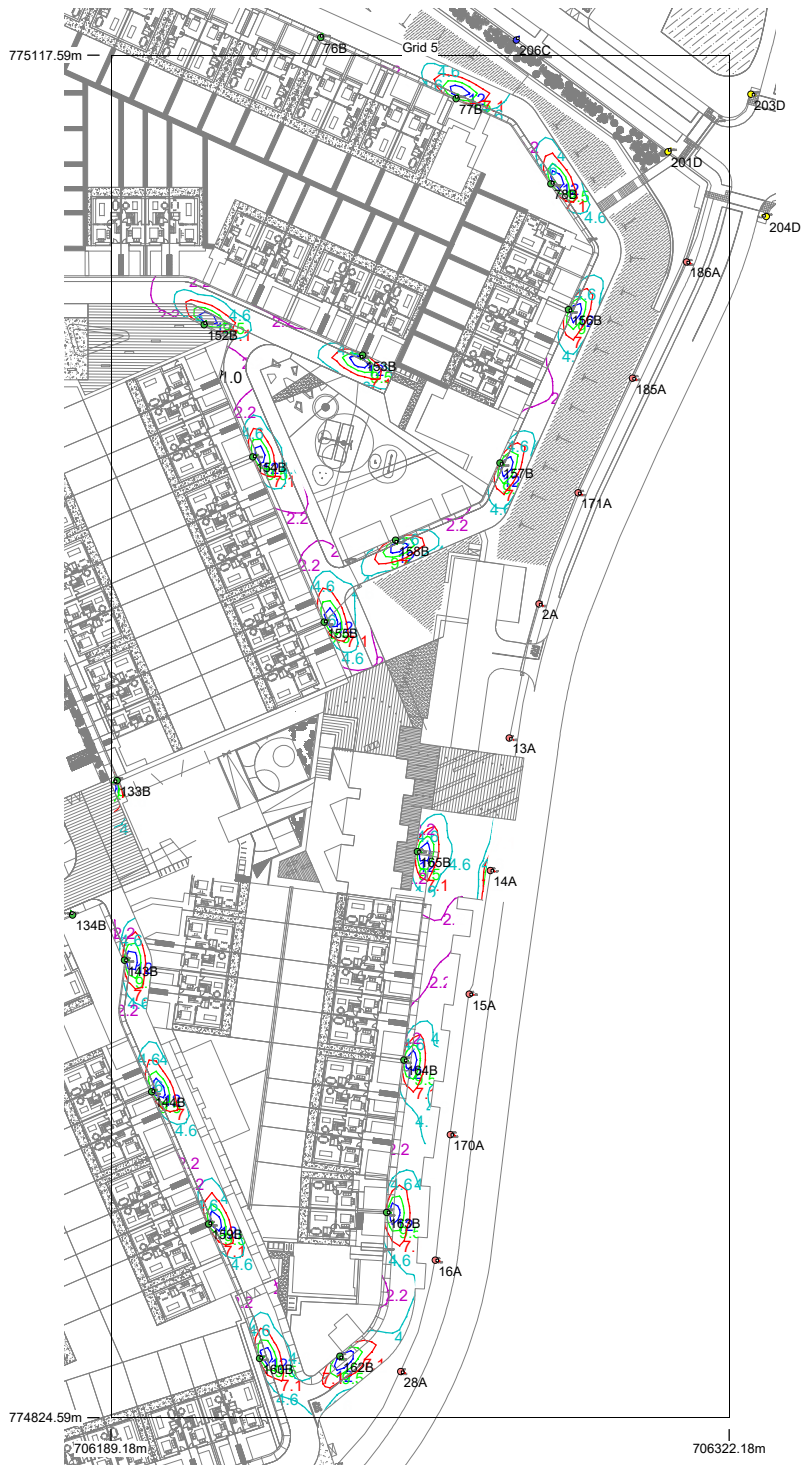


Results

Eav	4.73
Emin	1.04
Emax	14.74
Emin/Emax	0.07
Emin/Eav	0.22

Horizontal Illuminance (lux)

Grid 5

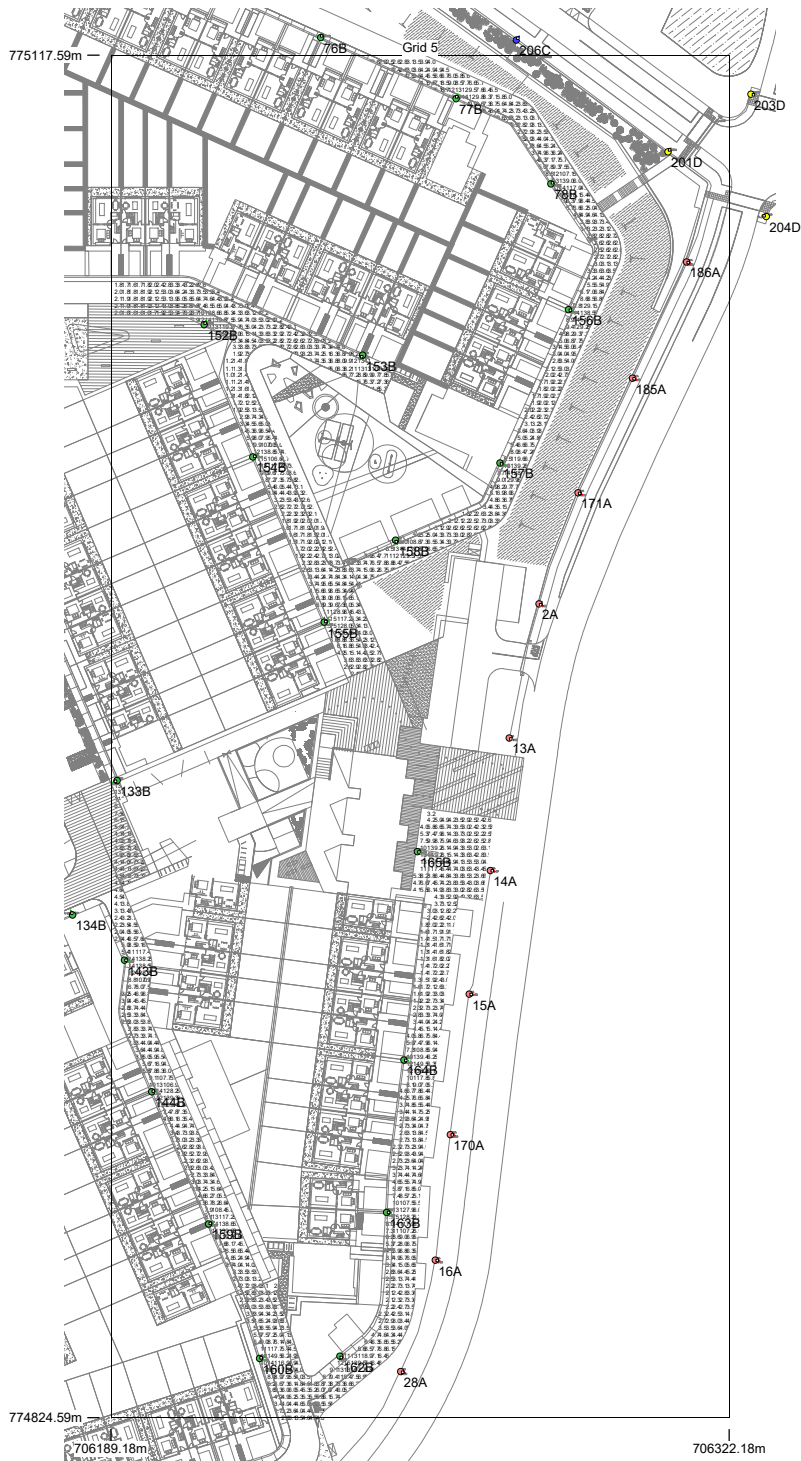


Results

Eav	5.06
Emin	1.03
Emax	15.50
Emin/Emax	0.07
Emin/Eav	0.20

Horizontal Illuminance (lux)

Grid 5



Results

Eav	5.06
Emin	1.03
Emax	15.50
Emin/Emax	0.07
Emin/Eav	0.20